



The 5th Digital Health Society Summit

Johanna Seppänen, PhD, Director

Findata.fi | @FindataFi | info@findata.fi

Outline

- Current status and Findata services
- What data are available?
- How to access data?
- Pricing and costs?



Cornerstones for secondary use in Finland

- Rich national data registers with long time series
 - In practice 100% coverage of Finnish population
 - Long tradition of national health registers and their secondary use
- Opt-out principle in secondary use of social and health data
- Personal identity code: a key to linking personal information from various registers
- High trust on
 - Government and authorities, transparent operation
 - Benefits from research (as better healthcare)
 - Data security and data safety

Finnish Social and Health Data Permit Authority Findata

Finland has established a centralized health data access point for researchers - Findata

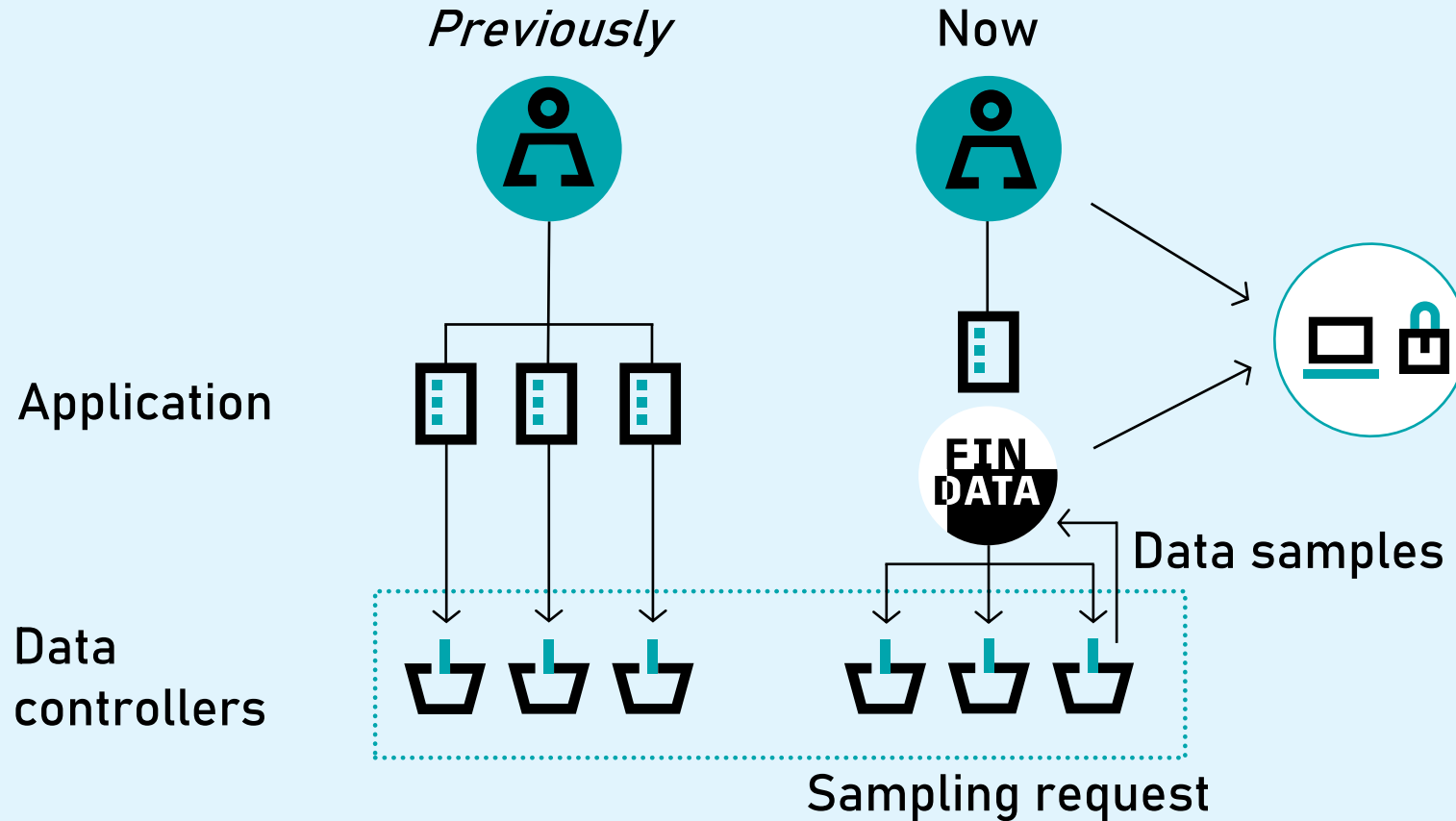
- The aim is to improve access to rich nation-wide datasets
- Operation based on national Act on Secondary Use of Health and Social Data (2019), closely comparable to EHDS
- Findata started to operate in 2020 → Over three years of first-hand experience, about 1 200 applications
- Status: an independent authority positioned in Finnish Institute for Health and Welfare, steering by Ministry of Social affairs and Health
- Non-profit organization, yearly budget ~3 M€, staff ~30 persons

One-stop shop for secondary use of health data

Findata services

- Grants data permits when data are requested
 - from multiple controllers
 - private health care units
 - Kanta-services (electronic health records)
- Collects, links and pseudonymises the data
- Produces aggregated data on request
- Maintains a secure IT-environment for applying, transferring and managing data
- Provides secure remote access system Kapseli® for data analysis
- Help Desk for data users info@findata.fi
- Anonymization services
- Issues R&D&I infrastructure regulations

Previously and at present



- One application regardless number of registers
- Findata links and pseudonymizes data
- Data analysed in a secure remote access system Kapseli®

Data access and discovery

Data accessed via Findata

Social and health care service providers, both public and private sector

- Patient records in primary and special health care
- e-prescriptions
- Social welfare services

Cover 100% of Finnish population

National registers

Biobanks?
Genome data?

Data accessed via Findata

Social and health care service providers

- Public and private sector
- Patient records in primary and special health care
- Social services



Kanta services

Key health data, COVID-19, e-prescriptions + more

Finnish Institute for Health and Welfare (THL)

- Cancer register
- Infectious disease register
- Hospital discharge register
- National vaccination register
- Medical birth register
- Register of induced abortions
- Register of congenital malformations
- Etc.

Social Insurance Institution of Finland (Kela)

- Prescriptions
- Social benefits

The Finnish Digital Agency (DVV)

- Population data
- Families
- Residence
- Building information

Finnish Centre for Pensions (ETK)

- Benefits and incomes
- Diagnoses

Finnish Medicines Agency Fimea

- Special permit register
- Adverse reaction register
- Incident report register

Finnish Institute of Occupational Health (TTL)

- Occupational illness
- Exposure measurements
- Patient register

Statistics Finland

- Register on cause of death

National Supervisory Authority for Welfare and Health Valvira

- Social and healthcare professional person registers
- Register of private service providers

Regional state administrative agencies (AVI)

- Matters related to social and health care



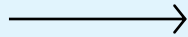
Data discovery: National Metadata Catalogue

- Task mandated to Findata by the Act on the Secondary Use of Health and Social Data
- Regulation on the data contents, concepts and data structures for data descriptions issued by Findata in 2/2021: findata.fi/en/data/regulation-on-data-descriptions/
- Metadata catalogue: www.aineistokatalogi.fi
- Currently includes data descriptions of health and social data from 39 data controllers, both national and regional
- Data descriptions extending from data resource/dataset level to variable and code level
- Includes information on data quality

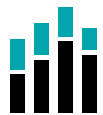
How to access data



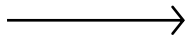
Individual level
data



- Direct identifiers removed
- Available in an audited environment for a set period
- For the purposes specified in the Act



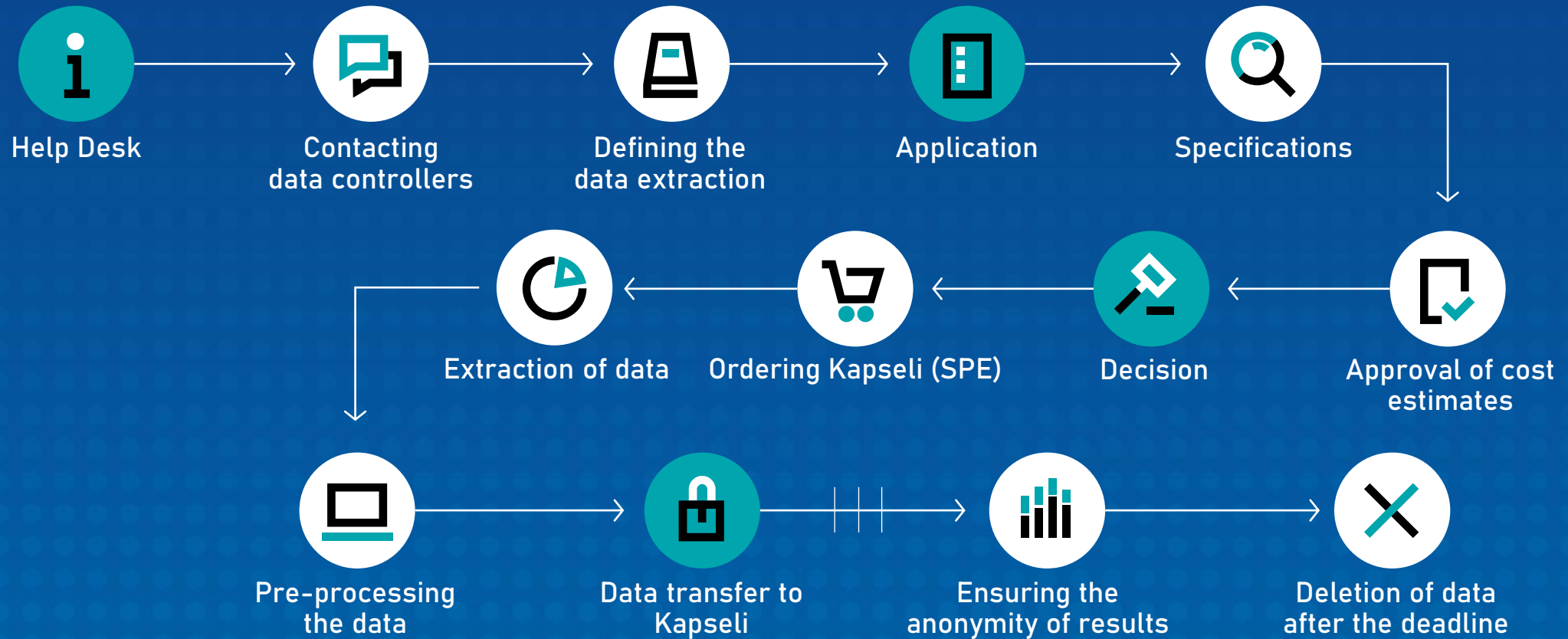
Aggregated
data



- Anonymous statistical level data
- Sent to the client
- For the purposes specified in the Act

- A data utilisation plan is always required to access data sets
- Individual level data permits are always for specific purpose, time period and persons

Customer path



Duration of the permit process

| First check | Queue | Processing of application | Extracting and compiling of data |
|---|--|--|---|
| <ul style="list-style-type: none">• Done within one week of submitting an application• If information is missing, Findata provides guidance on filling it in | <ul style="list-style-type: none">• At the moment approximately 4 months• Queues have shortened significantly over the years (Aug 2023: 47 vs. Aug 2022: 104 applications in queue) | <ul style="list-style-type: none">• Approximately 3 months• Systemic process, in which every party can slow or speed up the process (applicant, controllers, Findata) | <ul style="list-style-type: none">• Goal: 60 days from the permit decision• Factors that affect the process: extraction carried out in several stages, delays from controllers, particularly complex data etc. |
| <p>Estimated total time for applying and accessing individual level data: 9 months</p> <p>Estimated total time for amendments to existing permit: ~1-6 weeks</p> | | | |

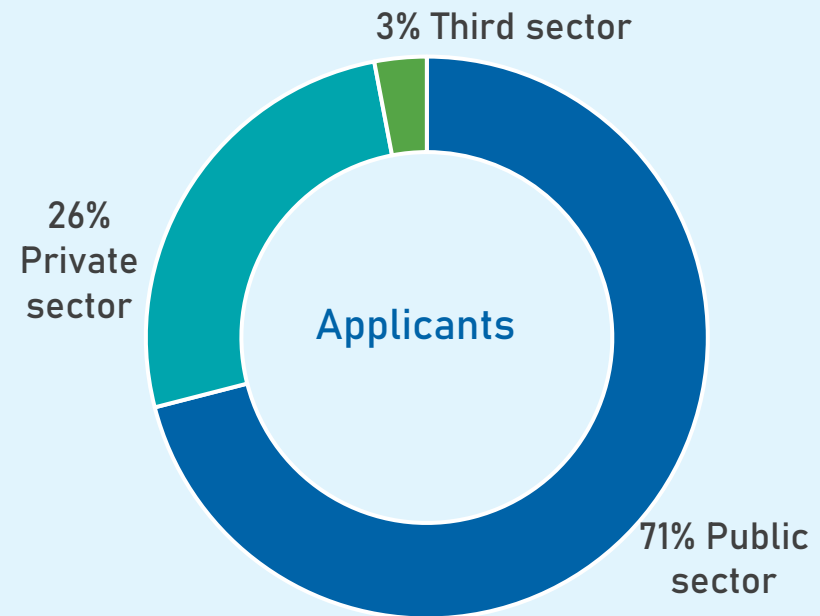
Year 2022

270 Applications

284 Decisions

From which

- 94% individual level data
- 95% for scientific research



Issued permits openly available: findata.fi/issued-permits

Pricing and costs

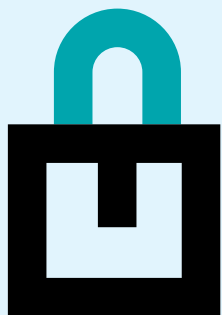
Pricing of services

- Based on decree issued by Ministry of Social Affairs and Health
- Prices consist of four elements:

| Element | | Price | Additional information |
|--|--------------|--|--|
| 1. Permit fee | Data permit | 600-3 000 € | 250 € for students |
| | Data request | 2 500 € | 250 € for students |
| 2. Reimburses for data controllers' sample costs | | 2 000 € median price per data controller | 0-60 000 € range |
| 3. Findata's data management work | | 135 €/hour | Maximum estimate given in advance |
| 4. Payment/subscription for Kapseli SPE | | 160-460 €/month | Depending on the size of the computing package |

For up-to-date information, please see: findata.fi/pricing

Kapseli® remote access users (Oct 2023)



Projects

139

Users

1 035

| Machine packages | Number |
|------------------|--------|
| Small | 42 |
| Medium | 45 |
| Large | 43 |
| Extra large | 9 |
| Total | 139 |

Overview: findata.fi/en/kapseli [Findata Regulation on secure operating environments](#)

Challenges

- A systemic change in the whole R&D environment
 - Not just a new player on the field, the rules have changed for all
- An ambitious timetable for setting up the services
 - Agile process
- Legal frame still developing
 - Compatibility with other regulation
- Data controllers' resources and capabilities
 - Data availability and interoperability
- Need for public discussion about the price and costs of health data

Trust is a must!

- Data sets made available without individual's direct identifiers
- A secure remote access environment for individual level data sets
- Security in Findata operating environment is controlled by an information security inspection body and Valvira
- Compliance with the Act supervised by
 - Ministry of Social Affairs and Health
 - Data Protection Ombudsman
 - National Supervisory Authority for Welfare and Health (Valvira)



Summary of the presentation

1. Findata's activities are based on the Act on the Secondary Use of Health and Social Data, issued in 2019.
2. Findata has received more than 1 000 applications and made around 900 decisions.
3. Findata takes care of the whole process: aiding data discovery → providing a help desk for clients → handling applications → issuing permits → requesting & managing the data → providing the pseudonymised data in a SPE.
4. Findata has faced challenges but also overcome difficulties & streamlined its processes during the first few years, relying in active co-operation with the stakeholders.
5. Findata is actively taking part in the EHDS preparations.

Thank you!

FIND DATA

findata.fi

info@findata.fi | @FindataFi